



Black Bull House

Indoor Accommodation for groups of Scouts and Guides

1st Dipton Scout & Guide Group
Black Bull House
Front Street
Dipton
Stanley
DH9 9HB

info@1stdipton.org.uk
1stdipton.org.uk

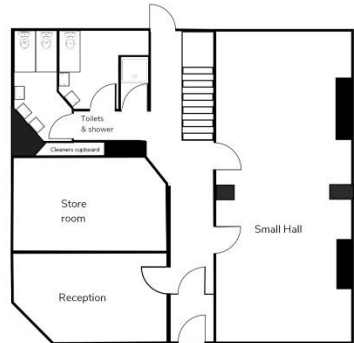
 /1stdipton

Layout

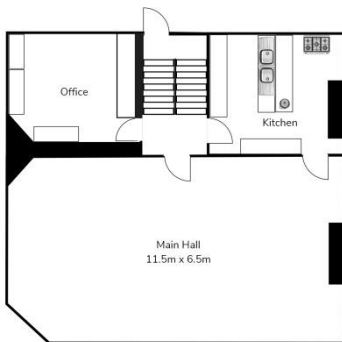
Black Bull House is across three floors.

On the ground floor there is a reception room with comfortable seating, a small hall for games etc., male and female toilets and a shower.

Ground floor

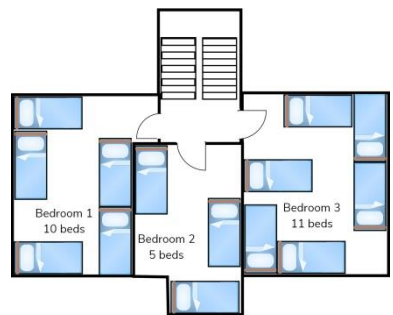


First floor



On the first floor is the kitchen with large cooker, fridge and microwave (please bring your own tea towels and washing up supplies). There is also the main hall and the office which has a small double sofa bed.

Second floor



The second floor is the main dormitory area, with three rooms sleeping 26 people. We do not supply pillows or bedding, so please bring your own.

Due to the location of the toilets on the ground floor some Beaver Scout colonies prefer to use the downstairs hall to sleep on the floor.

There are tables and chairs to seat 70 persons, and enough crockery and cutlery. There is also a yard to the rear of the building and a large grassed area suitable for games, activities and bouncy castles.

Please note, due to the layout of the building across three floors it is not suitable for people with mobility difficulties.

Things to do



[Derwentcote Steel Furnace](#)

The beauty of the Derwent Valley hides its once industrial heritage. As well as many former coal pit villages, it is the home of [Tanfield Railway](#), the oldest railway in the World, and [Causey Arch](#), the oldest single span railway bridge in the World. It is also the home of steel making, with Britain's oldest [Steel furnace at Derwentcote](#). All of these within walking distance of the headquarters. [The Land of Oak and Iron](#) website has more information on local historical sites and walks to explore this amazing area. You should also catch a view of the Red Kites gliding across the sky.

[Beamish Open Air Museum](#), just 10 minutes away, is a fantastic museum with recreated villages and mines from the early 1800s to the 1950s, for a chance to see what life was like in the north east of England.



[Beamish Museum](#)



[Hadrian's Wall near Housesteads](#)

A bit further back in time, there are remains of Roman Forts close by in Lanchester and [Ebchester](#), which were on Dere Street, the Roman road to Hadrian's Wall. [Corbridge Roman Town](#), about 25 minutes away, has impressive remains, and Hadrian's Wall itself is just an hour away. The most impressive part of the wall is at [Housesteads](#), or you can see a recreation of a Roman fort at [Arbeia Roman Fort](#) in South Shields.

High Force, North Pennines



We are also just 10 minutes away from the North Pennines AONB, with many walks, cycle routes and the chance to take part in outdoor activities.

The C2C cycleways are close by, with the Derwent Walk to Newcastle to the north,

and Consett to Sunderland route less than mile to the south, making the headquarters an ideal final night's accommodation for your C2C challenge.

The cities of Newcastle and Durham are within 30 minutes drive. With many museums and attractions, including Durham Cathedral which was one of the locations for the Harry Potter films.

Just some of the many other local attractions include:

- Diggerland
- Gibside National Trust
- Gateshead Scouts Whickham Thorns Activity Centre
- Gateshead Metrocentre, including Clip and Climb, bowling and Cinema
- Battlezone Laser and No Limits Paintball/Laser
- The Durham Treasure Trail
- Newcastle Code Breaking Walk or The Newcastle Spy Mission Treasure Trail
- Adventure Valley
- Hexham Abbey and Old Gaol
- Canoeing at Ebchester

Arrival and Departure

There is parking for four or five vehicles in the yard to the rear of the building and one at the side. If children are being dropped off and picked up by parents, they should use the public car park, which is just 50 metres up the road, and not stop in front of or around the building.